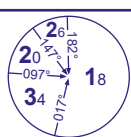
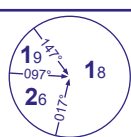


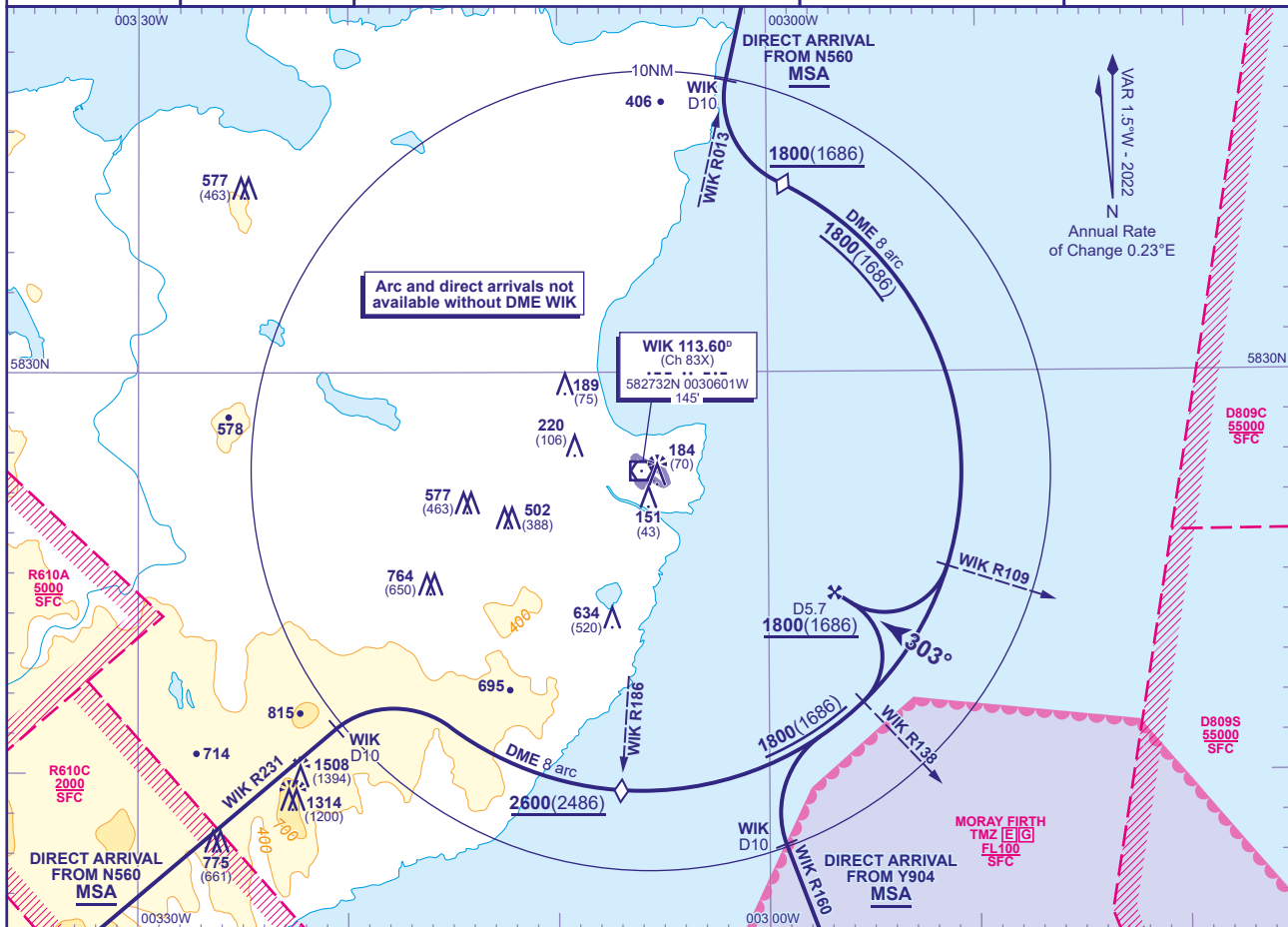
Direct arrivals
to VOR/DME
RWY 31
(ACFT CAT A,B,C,D)TRANSITION ALTITUDE
3000

MSA 25NM VOR WIK



MSA 10NM VOR WIK

APP	119.705	WICK APPROACH	AD ELEVATION	126
TWR	119.705	WICK TOWER	THR ELEVATION	114
ATIS	113.600	WICK INFORMATION	OBSTACLE ELEVATION	1508 AMSL (1394) (ABOVE THR)
			BEARINGS ARE MAGNETIC	

**DIRECT ARRIVAL FROM NORTH VIA N560**

At MSA or above, at WIK DME 10 turn left to intercept the 8 DME arc WIK clockwise. Once established on the 8 DME arc descend to **not below 1800(1686)**. At lead R109 turn right to intercept R123 WIK VOR inbound and continue as for Basic Procedure.

DIRECT ARRIVAL FROM SOUTH VIA N560 or Y904

At MSA or above, at 10 DME WIK turn right to intercept the 8 DME arc WIK. Once established on the 8 DME arc :

From N560 : Descend **not below 2600(2486)**, when crossing R186 WIK descend **not below 1800(1686)**.

From Y904 : Descend **not below 1800(1686)**. At lead R138 WIK turn left to intercept R123 WIK VOR inbound and continue as for Basic Procedure.

CHANGE (8/23): MSA UPDATED. WIK VOR RECALIBRATED.